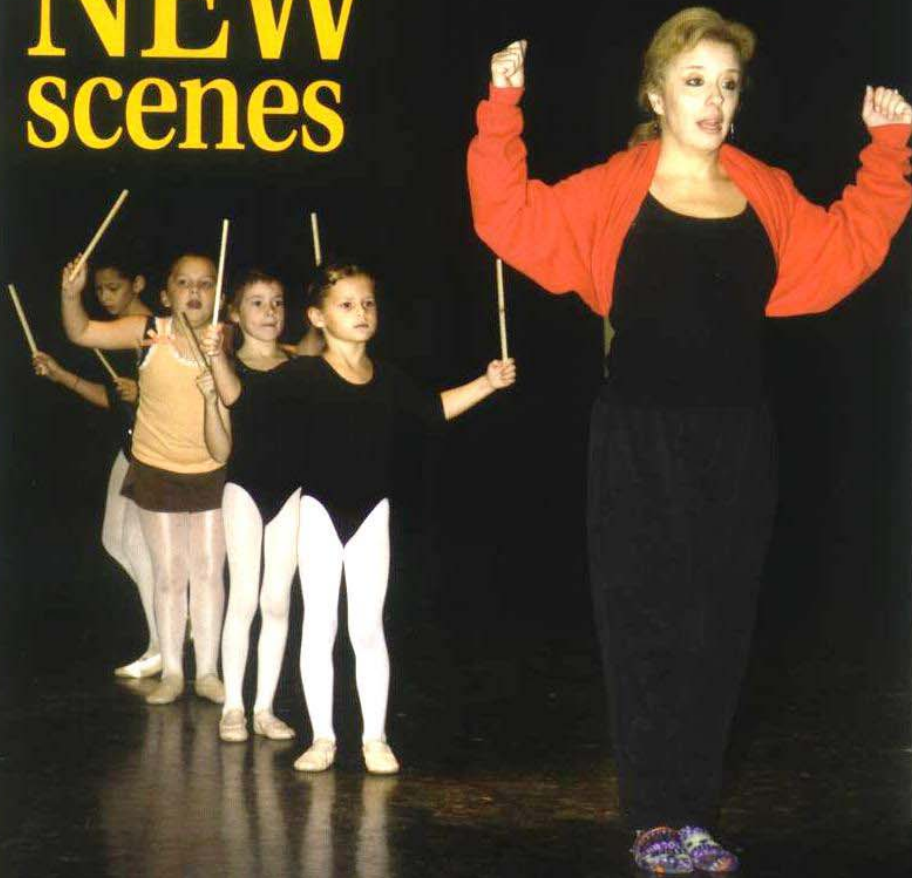


# Behind the NEW scenes



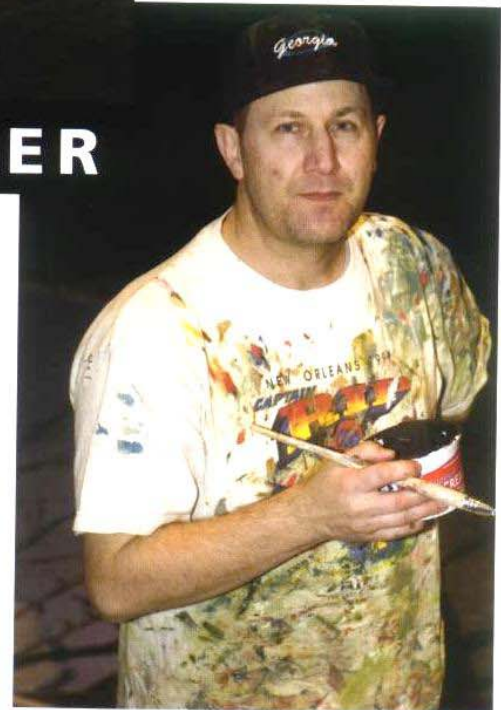
## AT THE NUTCRACKER

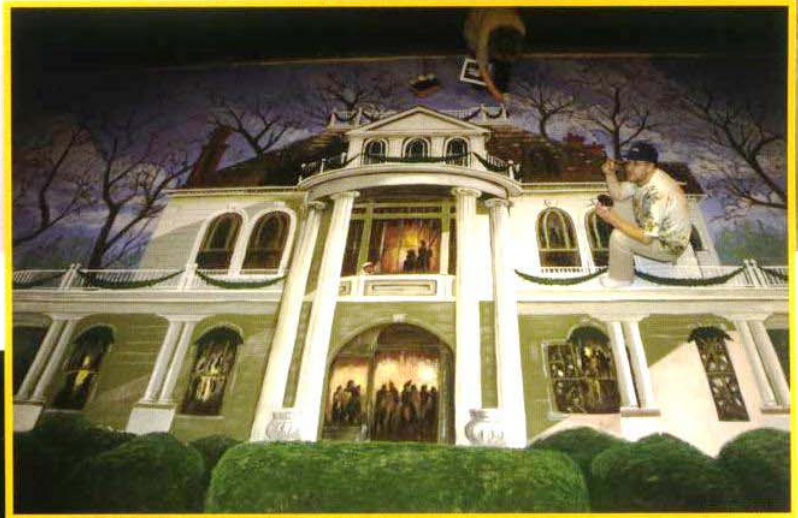
This production represents the work of a lot of local talent, not just Main Street Players, the actors and performers, but the artists and members of the River Roots Visual Arts Alliance that make the performance of Dublin's own "Nutcracker," just get better every year.

Before the first sugarplum fairy learns the steps that make the stage a place of comfort instead of fright, dozens of parents and artists and community volunteers have dreamed and planned and worked. This year's Nutcracker benefited from hundreds of hours of set and scene development that adds to a wonderful body of work that brought us here.

Frank Brantley (right on facing page) built the frame for the giant cupcake that was decorated under the direction of artist Cid White (left in photo). Frank also built the sleigh, the arabian bench and a present cabinet for the production.

Helping decorate the cupcake were Cheryl Andrews, Guin Barron, Kellie Brown, Ann Caskey, Laura Courtenay, Lisa Foster and Rhonda McLeod.





"It's supposed to be a surprise," Frenasee Daughety said of the giant backdrop painting of the Lovett House. "DuBose asked us to create this to honor the Lovetts and their endowment of arts in Laurens County."

Juan Lleras chaired the project, working with Jack Head, Suzanne Dukes, Thelma Hillier, Brenda Lausch, Rhonda Dixon, Jose Archila, Cid White and Frenasee (with Juan, left). The scene was drawn in grids, laid out by Head, and took more than 300 artist-hours to complete. The 180-foot by 40-foot painting appears in the opening party scene as guests arrive.